

New faces and old welcomed to Generation Next's board

Generation Next has announced the second iteration of its board – known as “champions” – to help shape the young people in business network's activities for the rest of the year. **Jasmine Thompson** profiles the newest additions and those returning to help it grow into the future.

Rikan Patel

Job title: Director

Company and location: Business 2 Business, Leicester



Through his company, Rikan supports individuals into employment via a variety of services which address barriers to employment and upskilling. It also offers a socially responsible recruitment service, which is publicly funded, and helps organisations source the right candidates.

Prior to joining Business 2 Business, Rikan graduated in law from the London School of Economics and later completed his master's degree at Imperial College Business School, before furthering his studies in leadership at Cambridge University.

Karishma Karia

Job title: Social media co-ordinator

Company and location: Jake & Nayns, Leicester

Alongside working within the team at food manufacturer Jake & Nayns – which supplies snacks such as filled naans for major supermarkets' food-to-go ranges – to create new and exciting ways to connect with the next generation via social media, Karishma is completing her master's degree and legal practice course at De Montfort University.

With a passion for connecting with new people and learning from others, she also works as a paralegal within Pattersons Commercial Law, in Ratby, Leicestershire.

A welcome back to our returning board members

Joining Rikan and Karishma are a host of returning board members who were part of the inaugural line-up of champions appointed last year. Emma Baumbach continues as chair, with Daniel Nikolla appointed as vice-chair for 2022/23.

Emma Baumbach – Chair (1)

Emma is an independent financial planner for Future Life Wealth Management, based in Renishaw, and provides bespoke and holistic financial solutions for clients across the East Midlands and neighbouring regions. Her career in the financial services industry started as an administrator in London more than 10 years ago after leaving school and she soon fell in love with helping clients achieve their financial goals.

Daniel Nikolla – Vice-chair (2)

Daniel is the marketing manager of Hardy Signs, a Burton-based physical and digital signage company. He moved to London from Albania in 2013, and studied at City and Islington College, where he was also the student union president and sat on the board of governors.

Beth Bearder (3)

Beth is a senior associate solicitor at Nelsons specialising in employment law, providing a full service to protect her clients against employment-related risks. She advises on a range of matters including claims for unfair dismissal, harassment, breach of contract and misconduct investigations, with particular expertise advising on disability discrimination.

Byron Burghart (4)

Byron is an investment manager at Brewin Dolphin's Nottingham office, working with people from a variety of backgrounds to help them make the most of their finances. He has recently completed an MBA at Cranfield University, which has helped his understanding of being a leader within an organisation.

Hope Thorley (5)

Hope is a senior resourcing advisor at Pick Everard, responsible for sourcing and attracting exceptional talent to work within the Leicester-based construction and property consultancy's diverse, inclusive and collaborative environment. Prior to this, Hope worked within the hospitality sector both in the UK and overseas.

Katie Gilbert (6)

Katie has recently been appointed commercial director at Nottingham-based food gifting business TTK Confectionery. She is passionate about paving the way for her team to succeed and grow in their own roles within the business. In 2020, her team won Team of the Year at the Chamber's Enterprising Women Awards.

Katrina Starkie (7)

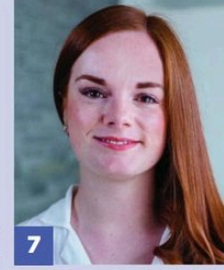
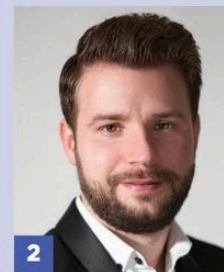
Katrina is the space and community manager at Nottingham Trent University's new Dryden Enterprise Centre. Katrina's role is to support the centre's members to find the right space for them to help grow their businesses in a place where ideas and people can thrive.

Lee Tomes (8)

Lee Tomes is an award-winning filmmaker and managing director of video storytelling company Orange Fox Studios, based in Leicester. Lee has helped businesses, brands and non-for-profits share their stories through film and video for a decade. Outside of the business, he has had various projects screened at national film festivals as both a director and cinematographer.

Scarlett Tinsley (9)

Scarlett is the brand and marketing executive at ER Recruitment, after joining the business as an intern while studying at De Montfort University. Since then, Scarlett has worked on some incredible campaigns and projects, including the the Leicester agency's BrightER Futures project with DMU.



Understanding the differences between CSR and ESG

Unwrapping the confusion between CSR and ESG is the aim of the Chamber's upcoming Corporate Social Responsibility Summit.

The event, titled *From CSR to ESG: Delivering social responsibilities with impact*, the free event takes place on Tuesday 7 June at the University of Derby's Enterprise Centre, from 9.30am to 12pm.

It will feature a series of presentations and discussions that compare corporate social responsibility (CSR) and the wider definition of environmental, social and governance (ESG), plus why businesses should be engaging with these agendas.

Chris Hobson, the Chamber's director of policy and external affairs, said: "CSR activities – supporting communities and charitable causes – have long been recognised as being a part of what a responsible business does.

"However, in more recent times, there has been an increasing focus on the importance of businesses also having a structured approach to ESG in place.

"The two terms often cause confusion among businesses, with many questioning what the difference means to them and why it should matter.

"The 2022 Corporate Social Responsibility Summit explores this question and looks at why it's important for businesses to ensure they deliver social responsibilities with impact."

The Chamber's chief executive Scott Knowles will open the event. Speakers include Chamber president and Futures Housing Group chief executive Lindsey Williams; RSM associate director for risk assessment and ESG Paul Callum; YMCA Derbyshire CEO Gillian Sewell; and University of Derby associate professor Dr Rhiannon Jones.

To register for the event, visit bit.ly/CSRSummit22



SAFETY CRITICAL MEDICAL CERTIFICATES

UK-WIDE COVERAGE

LONDON LEEDS LEICESTER
GLASGOW MANCHESTER KENT

REDUCE WORK ABSENCES

Under current health and safety legislation, employers have a duty of care to prevent ill-health or injury of their workers. This is particularly relevant to those carrying out safety-critical tasks and those around them.

Work absences can be reduced by ensuring that through a worker critical medical your employees have everything they need to assist them in being productive, work environment changes or adjustments in breaks.

HealthscreenUK can provide full reports detailing what changes may need to be implemented in order to increase employee work health and comfort.

24-48 HOUR CERTIFICATE TURNAROUND

It is possible for us to provide a valid safety critical medical certificate 24-48 hours after a medical 'given that the employee is indeed fit for work without question.

Mobile Units Available

HealthscreenUK is able to provide all manner of Health Surveillance and Specialist Services (including biological monitoring) UK-Wide using our mobile units if your workplace doesn't have the space.

FREE No-Obligation Quote
CALL 01455 243700 BOOK healthscreenuk.co.uk